



PREMIER
COMMERCIAL
PROPERTIES

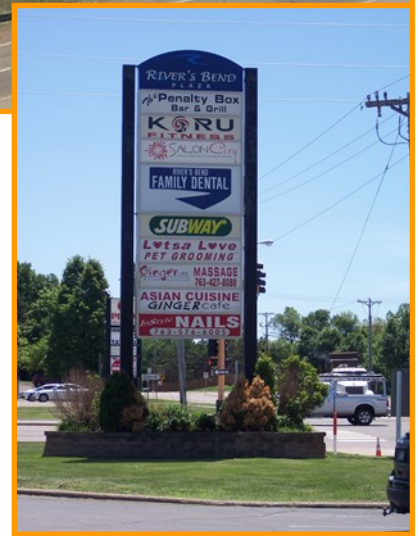


For Lease

14001 St Francis Blvd NW, Ramsey, MN 55303

PROPERTY DETAILS

- * Total building size 24,780 square feet
- * Vibrant center on busy intersection
- * Excellent signage & visibility to Hwy 47 & Bunker Lake Blvd
- * Signalized intersection - 22,000 vehicles per day (MNDOT 2019)
- * Parking ratio 6.6/1000
- * Join Subway, Family Dental, Asian Cuisine & Riversbend Bar & Grill
- * Suite 14007 - 2,698sf available - former fitness studio with all buildouts in place
- * Suite 14037 - 1,200sf - wide open retail



PROPERTY DETAILS

LEASE RATE: NEGOTIABLE
CAM/TAX: \$7.72/SF (2021)

FOR MORE INFORMATION, CONTACT

Marty Fisher/Mike Fisher
612.708.2873
mfisher@premiercommercialproperties.com
mikefisher@premiercommercialproperties.com



PREMIER
COMMERCIAL
PROPERTIES

For Lease

14001 St Francis Blvd NW | Ramsey, MN | 55303

FOR MORE INFORMATION, CONTACT:

Marty Fisher | 763.862.2005 | mfisher@premiercommercialproperties.com



Wide open, stage in place, perfect fit for a fitness group

Leased to a nutrition group

Suite 14007 - 2,698rsf
Former fitness space



